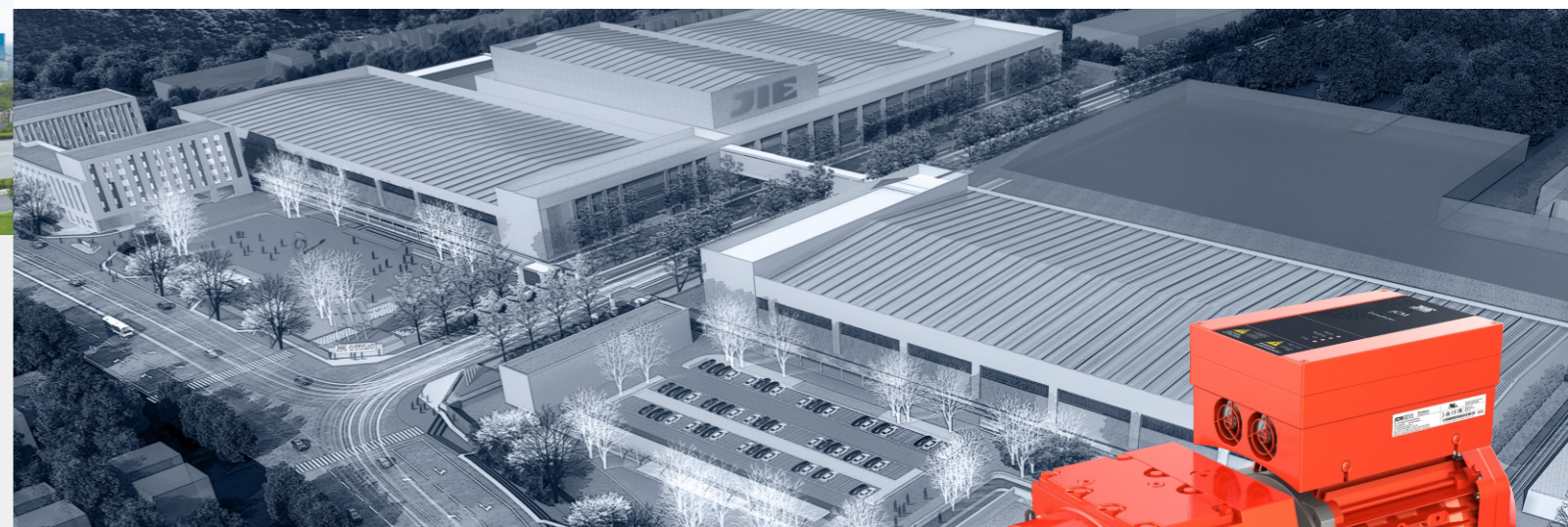




杰牌官方网站  
Official Website

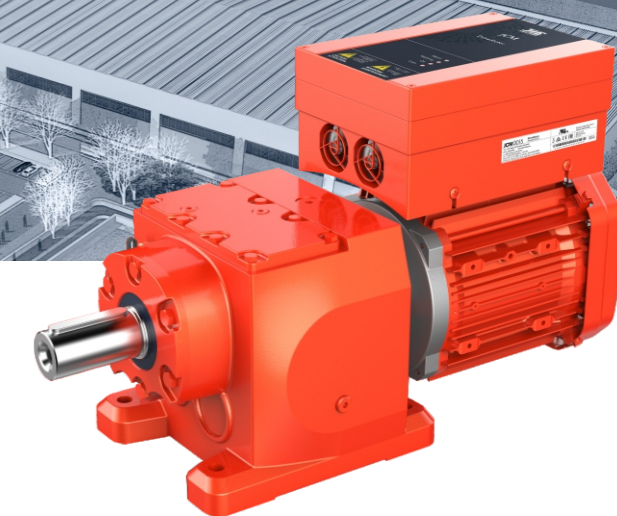


杰牌官方微信  
Official WeChat



杰牌始创于1988年，坚持100年做好一台减速机，匠心打造齿轮行业百年企业。  
 杰牌减速机、电动机、变频器及传动系统、驱动系统、控制系统等整体传动解决方案，服务全球市场。  
 杰牌坚持“专业化、智能化、全球化”发展规划，致力于智能工厂、智能产品、智能服务。杰牌为全球好客户做好产品！  
 JIE Drive, established in 1988, focus on one gear reducer for 100 years, to create the century enterprise with craftsman spirit in the gear industry ;  
 JIE will serve the global market with the total drive solution of Gear reducer, Motor, Inverter and Transmission system, Drive system, Control system, etc;  
 JIE insists on " Specialization, intelligence, globalization" global development plan and dedicates to intelligent factory, intelligent product, intelligent service. JIE provides the excellent product to the excellent customer!

因专业 而杰出  
 Excellence From Expertise



JCM变频一体减速电机  
 JCM Frequency Conversion Gearmotor



杰牌传动科技有限公司  
 JIE DRIVE TECHNOLOGY CO.,LTD.

地址:中国杭州萧山·杭州空港新城·青六南路399号 邮编: 311223  
 Add:399 QingLiu Nan Road, Airport New Town, Xiaoshan, Hangzhou, China P.C: 311223  
 热线 Hotline: +86-571-8299 1111 400-114-1111  
 总机 Operator: +86-571-8299 2222  
 传真 Fax: +86-571-8299 3333  
 开户: 农行杭州萧山义盛支行  
 Bank: Agricultural Bank of China Hangzhou Xiaoshan Branch, Xiaoshan Yisheng Sub-Branch  
 帐号Account: 084 001 040 010 347  
 http://www.jie.com.cn  
 E-mail:jie@jie.com.cn

本产品目录中的所有产品，包括但不限于产品设计、外观、材料、颜色、包装、图纸、数据、技术规范等，已申请并获得授权或注册相关知识产权，受相关法律法规的保护。杰牌享有本产品目录及其所载内容、信息的知识产权。未经许可，不得复制、抄袭或以任何方式使用。 All the products in this catalogue, including but not limited to their design, appearance, materials, color, package, drawings, data, technical specifications etc, have been applied for and obtained the authorization or registration of related intellectual property rights and protected by the relevant laws and regulations. JIE owns the intellectual property rights of this catalogue and contents and information therein. No copy, reproduction or use without written permission. JIEC · 09A · 2018B-3000



杰牌传动科技有限公司  
 JIE DRIVE TECHNOLOGY CO.,LTD.

www.jie.com.cn



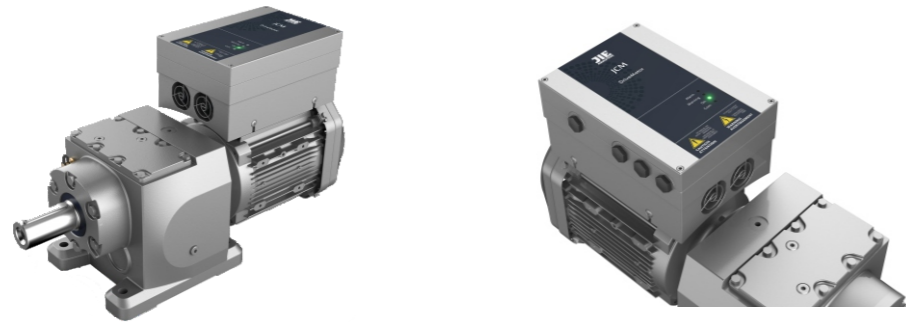


## 现场分布式驱动 Field Decentralized Drive Systems

### 变频一体机减速电机 Frequency Conversion gearmotor

JIE的变频一体 减速电机是将驱动装置（变频）与传动装置（电机和减速机）集成一体的调速传动设备，是传动、驱动、控制完美集成，具有节省空间、安装便捷、效率更高等特点，本产品符合IEC60034、IEC61800标准，获得CE电机能效认证。

JIE Frequency Converter Gearmotor is integrated with drive (frequency conversion) and transmission (motor and reducer). It is a perfect combination of transmission, drive and control system, with the advantage of space saving, convenient installation and high efficiency, and meets IEC60034、IEC61800 standard, and the motor has CE certification.



功率范围 Power Range	3 x AC380V ~ 3 x AC480V , 0.55 ~ 7.5KW
过载能力 Overload capacity	150% ,S1; 160% ,60S;
调速范围 Speed range	IM: SVC 1/100, PM: SVC 1/20
载波频率 Carrier Frequency	0.5 ~ 16KHz
防护等级 Protective class	IP66
功能 Function	SVC、VVVF、自动载波调制、电机保护功能、预置风机、水泵应用宏 SVC、VVVF、Automatic carrier modulation、Motor protective function、Preset fan、water pump application macro
接口 Interface	Modbus、Profibus-DP

### 高效率、低成本 High efficiency、Low cost

JIE的变频一体减速电机采用模块化设计，无需单独变频机柜，在有限的空间内让整体传动设备显得更加简洁。VVC+算法优化，提升驱动电机性能，适用EN60034-30-1的IE2、IE3、IE4或更多能效应用场景，满足现在及未来的能效需求。

JIE Frequency Converter gearmotor adapts the modular design without separate frequency conversion cabinet, which makes the whole drive equipment to be more concise within the limited space.VVC+ optimization algorithm, enhance the performance of the motor, widely for in EN60034-30-1's IE2、IE3、IE4 or more other efficiency application, to meet the present and future efficiency requirement.

### 智能化的控制 Intelligent control

JIE的变频一体减速电机具有智能逻辑控制器，能够使变频一体机在无外部控制单元场景中，协同或自主工作，自动监测预置事件，在事件触发时以预定动作响应。预置风机、水泵应用宏，便捷的调试工作适用于任何完美解决的方案。

JIE Frequency Converter gearmotor has an intelligent logic controller makes equipment to realize the coordination or autonomous work, to automatically monitor the preset events, and to quickly response as to preset action. Preset fan and water pump application macro, the convenient debugging work for any perfect solution.

## 行业应用案例 Industry Application

- 环保行业 Environmental Protection Industry
- 酒品输送线应用 Alcoholic Drink Conveyor Line Application
- 物流输送行业 Logistics Transportation Industry
- 烟草输送线应用 Tabaco Conveyor Line
- 装配输送线应用 Assembly Line Application
- 化工搅拌行业 Chemical Mixture Industry

